



## VTI DataLogger*Plus*

TEMPERATURE MONITORING, DATA LOGGING AND GENERAL PURPOSE DATA ACQUISITION

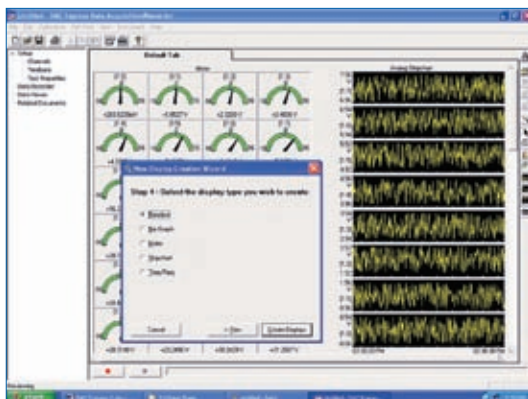
VTI DataLoggerPlus is a complete turnkey hardware and software solution ideal for temperature monitoring, data logging, and general purpose data acquisition.

Start testing now with easy-to-use, turnkey operation and simplified LXI Ethernet connectivity

VTI DataLoggerPlus combines intelligent hardware with full-feature data display and logging capabilities in an easy to use, turn-key, temperature and data logger solution. Faster time-to-test is achieved with intuitive setup and operation features that allow you to focus on core tasks and not on learning another software application.

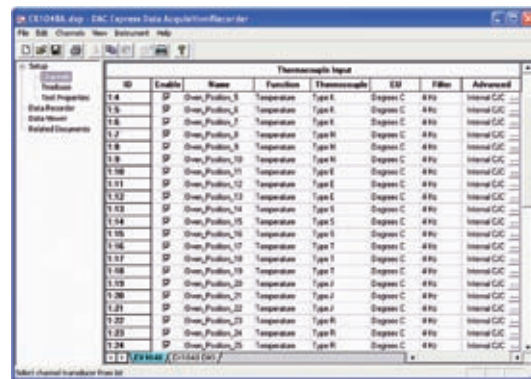
- No Programming Required
- Intuitive Graphical User Interfaces
- Automatic Instrument Discovery
- Online real-time Data Monitoring
- Post-test Data Viewing
- Formatted SDF and CSV Data

Experience the full potential of this powerful hardware and software combination in minutes. Out-of-the-box operation eliminates frustrating programming and configuration errors thanks to automatic instrument discovery and setup assistance, flexible data monitoring and displays, and post-test data formats compatible with familiar spreadsheet applications.



Online displays are easily added and modified on the fly.

Improve test efficiencies by eliminating time-consuming learning curves and software development



Easily set-up your hardware with Intelligent Configuration Tools

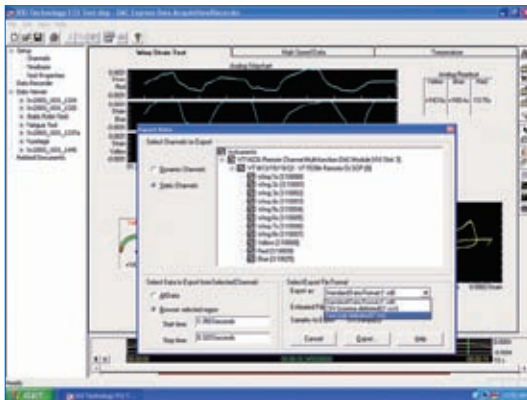
An intelligent configuration hardware tool automatically queries the data acquisition hardware and pre-loads information regarding specific parameters such as channel count, gain ranges, filter selections, and sample rates. This process reduces the guess work and eliminates configuration errors common with other general purpose data acquisition environments.

- Numeric Readouts
- Meters
- Bar-Graphs
- Strip Charts
- X-Y Plots
- Combine multiple display types

## Combining full feature instrumentation with an intuitive software interface simplifies system configuration and operation, thus greatly reducing test system implementation times without sacrificing performance

Powerful next generation instrumentation performance coupled with internal signal conditioning and advanced filtering

VTI DataLogger*Plus* provides powerful user interfaces that simplify the time-consuming tasks of configuring hardware, collecting data, and viewing measurement results. It's as simple as 1-2-3. A spreadsheet-like editor enables users to easily select and name input channels, pull-down menus provide easy access to available instrument settings, and similar channel types can be grouped for fast and efficient setup.



Test data can easily be exported to industry standard data formats

DataLogger*Plus* also exports data in comma separated value (CSV) format, tab delimited (TXT), or in SDF format for use in your favorite analysis tools such as Microsoft® Excel or Matlab from The MathWorks.

The EX1048A family of precision thermocouple and voltage instrumentation combines all of the features necessary to address your most demanding measurement applications in an easy-to-use, standalone package.

Integrated signal conditioning maximizes instrument performance by eliminating external cabling and interconnect harnesses

Measurement accuracy and repeatability are ensured thanks to features such as fully integrated signal conditioning, advance cold junction (CJC) compensation, and complete internal end-to-end self calibration. Sample rates of 1000 samples-per-channel are routed through independent signal conditioning paths with software selectable filters to provide the ultimate in flexibility and performance.

- LXI Class A Certified
- High-density Precision Measurements
- Combine Thermocouple and Analog Inputs
- Extensive Integrated Signal Conditioning
- Complete End-to-end Self-calibration
- 1000 Sample/Second/Channel Scan Rate

Data integrity is further enhanced with open thermocouple detection that provides a continual indication of individual channel status, both visually and programmatically, while complete channel independence ensures data integrity regardless of sample speed or input overload conditions.



### Ordering Information

VTI DataLogger*Plus* - EX1048A

EX1048A with Turnkey Data Acquisition Software



vxitech.com

# VTI DataLogger*Plus*

2031 MAIN STREET | IRVINE, CALIFORNIA 92614

949.955.1894